

CHILDREN'S MENU UP TO 12 YEARS OLD

TO START

Mini Soup Pot £4.5 (v)
with Bread & Butter

Cheesy Garlic Bread £4.5 (v)

Breaded Mozzarella Sticks £4.5 (v/gf)
Tomato Ketchup Dip

(v) Vegetarian (gf) Gluten Free

Allergen advice: If you have a food allergy, intolerance or sensitivity, please speak to your server about ingredients in our dishes before you order your meal



The
Lodge
Hotel & Bar

TO FOLLOW

Fish and Chips £8 (gf)
Garden Peas & Tartare

Penne Pasta £7 (v)
Tomato & Pea

Baby Lodge Burger £8
Melted Cheese & Skinny Fries

Chicken Goujons £7.5
Skinny Fries & Baked Beans

Sausages, Chips & Peas £8 (gf)

Homemade Cheese &
Tomato Pizza £7 (v)

SOMETHING SWEET

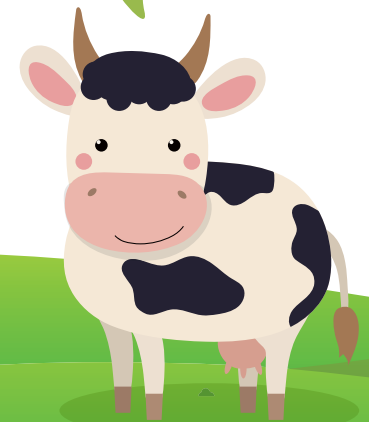
Sticky Toffee Pudding £4.5
Vanilla Ice-Cream

Warm Chocolate Brownie £4.5
Chocolate Ice Cream, Chocolate Sauce

Fresh Fruit Salad £4 (v)
Vanilla Ice Cream

Ice-Cream, Sprinkles and Sauce £3
Choice of: Vanilla, Chocolate or Strawberry

WHAT DO YOU
CALL A SAD COW?
Moo-dy!



| | | | | | | | | | | | |
|---|---|---|---|---|---|---|---|---|---|---|---|
| Q | P | W | E | R | U | T | Y | R | E | E | D |
| A | S | I | D | F | G | H | I | K | J | X | C |
| F | V | N | G | T | B | S | H | E | E | P | L |
| E | B | S | D | T | Z | U | M | N | R | Q | I |
| E | C | X | R | I | N | S | T | B | M | A | B |
| A | L | O | D | F | I | E | L | D | S | X | A |
| N | R | X | U | A | A | A | A | A | A | A | R |
| C | O | W | A | N | B | L | D | Z | Q | I | C |
| H | V | T | S | U | T | E | L | A | B | J | L |
| I | L | X | N | M | Z | R | V | N | E | A | F |
| C | F | G | H | I | S | E | Y | D | C | H | W |
| K | N | E | F | R | A | S | E | A | N | X | T |

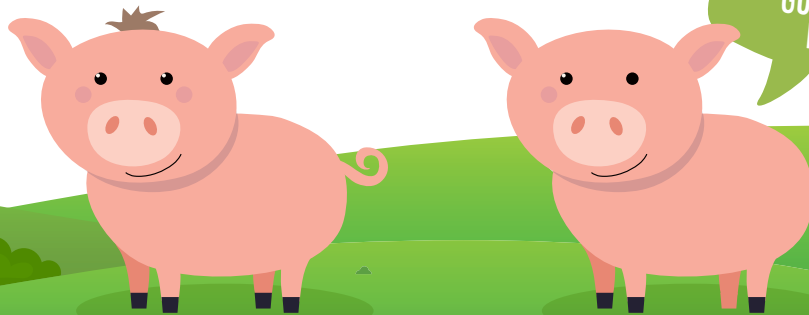
WORDSEARCH

HELP THE SEAL GET
BACK TO THE SEA...
BUT WATCH OUT FOR THE CRABS!



- Pig
- Seal
- Sheep
- Country
- Chick
- Cow
- Crab
- Sea
- Field
- Deer

CAN YOU SPOT FIVE DIFFERENCES
BETWEEN THE TWO PIGS?



WHERE DO PIGS
GO TO SCHOOL?
Hogwarts!

QUICK
MATHS

4

+

=

11

